



# MANORA

AIRPORT  
RESIDENTIAL

SALES PLAN

STUDIOS  
APARTMENTS  
PENTHOUSES

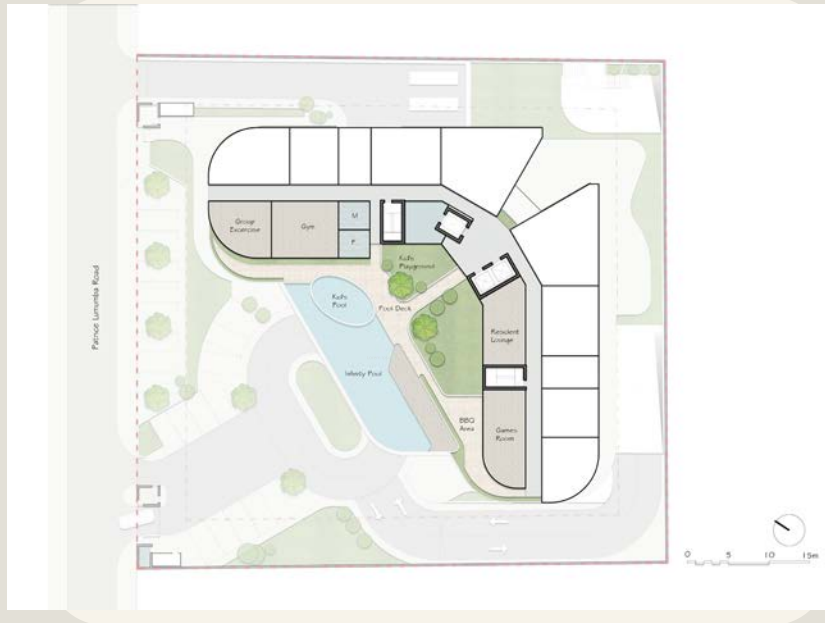


SALES PLAN

 MANORA

AIRPORT  
RESIDENTIAL

# LANDMARK ASSEST



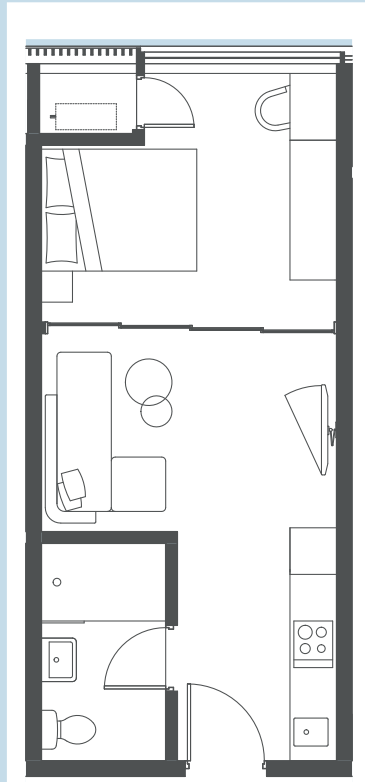
Manora Residence is enriched with every essential convenience of city life, just 4 minutes from the Kotoka International Airport and easily accessible from all major streets in prime locations in Accra.

Embark on an extraordinary living experience at Manora Residence, where opulence, sophistication, and impeccable design converge to create a haven of luxury. Nestled in the sought-after location of Airport Residential, this exceptional apartment residence redefines modern living, providing a lifestyle of indulgence and refinement. Situated amidst the charm and allure of Airport Residential on the popular Patrice Lumumba Street, Manora is the ideal accommodation for tourists, business travelers, and local professionals.

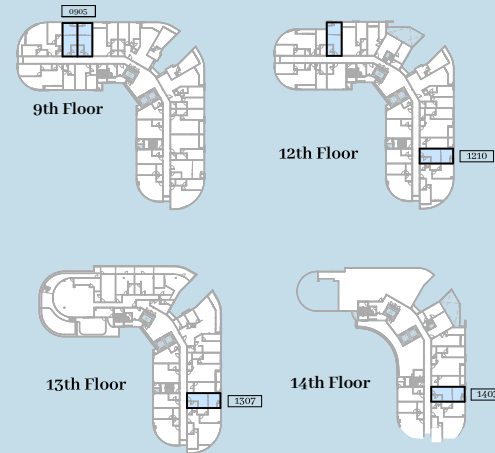


# STUDIOS

## TYPE E



### LOCATION



### DIMENSIONS

Bath	— 5 m <sup>2</sup>
Bedroom / Living Area	— 31 m <sup>2</sup>
Total Area: 2	— 36 m <sup>2</sup>

### APT NO.

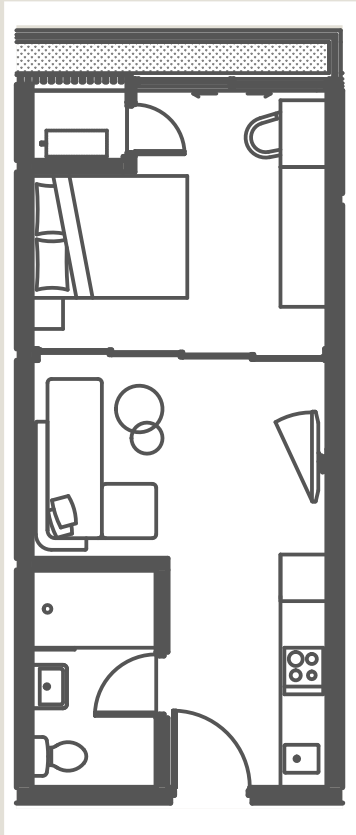
### FLOOR

### PRICE

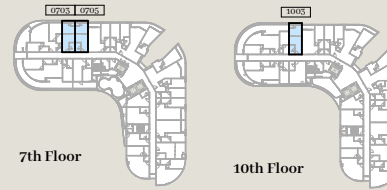
APT NO.	FLOOR	PRICE
905	Floor 9	\$108,600.00
1210	Floor 12	\$112,200.00
1307	Floor 13	\$114,000.00
1403	Floor 14	\$115,800.00

# EXECUTIVE STUDIO

## TYPE G



### LOCATION



### DIMENSIONS

Bath	— 5 m <sup>2</sup>
Bedroom / Living Area	— 31 m <sup>2</sup>
Planter Box	— 3 m <sup>2</sup>
Total Area: 3	— 39 m <sup>2</sup>

### APT NO.

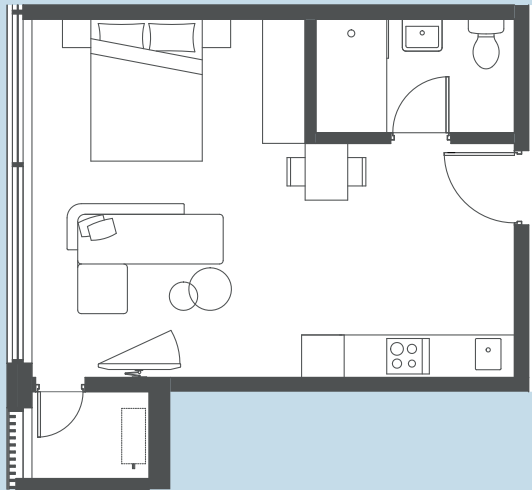
### FLOOR

### PRICE

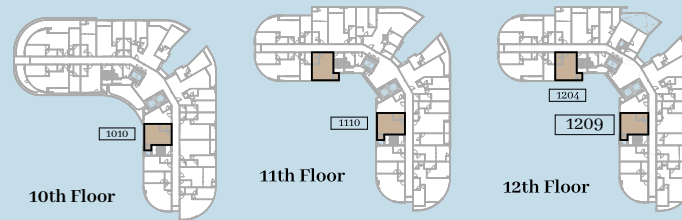
703	Floor 7	\$115,200.00
705	Floor 7	\$115,200.00
1003	Floor 10	\$117,150.00

# EXECUTIVE STUDIO

## TYPE H



### LOCATION



### DIMENSIONS

Balcony	– 3 m <sup>2</sup>
Bath	– 5 m <sup>2</sup>
Bedroom / Living Area	– 31 m <sup>2</sup>
Total Area: 3	– 39 m <sup>2</sup>

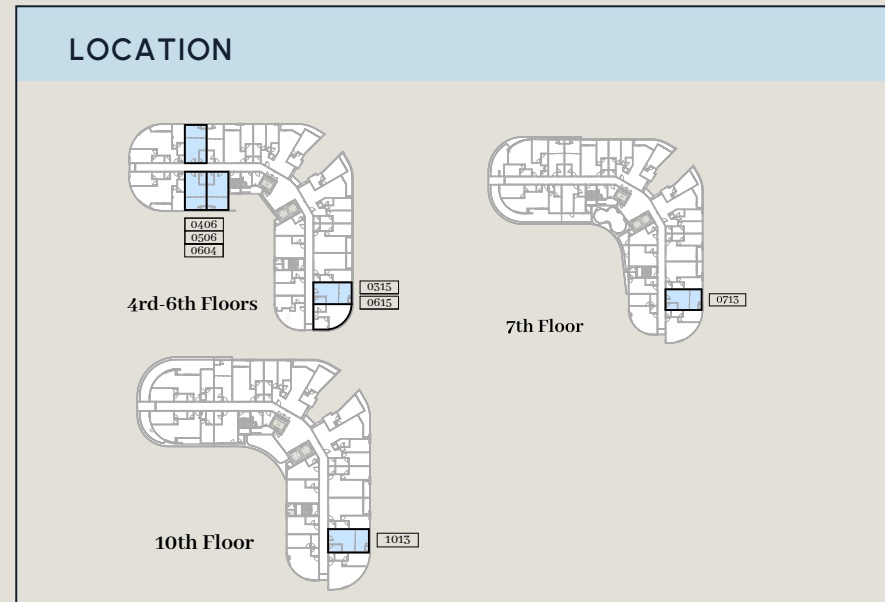
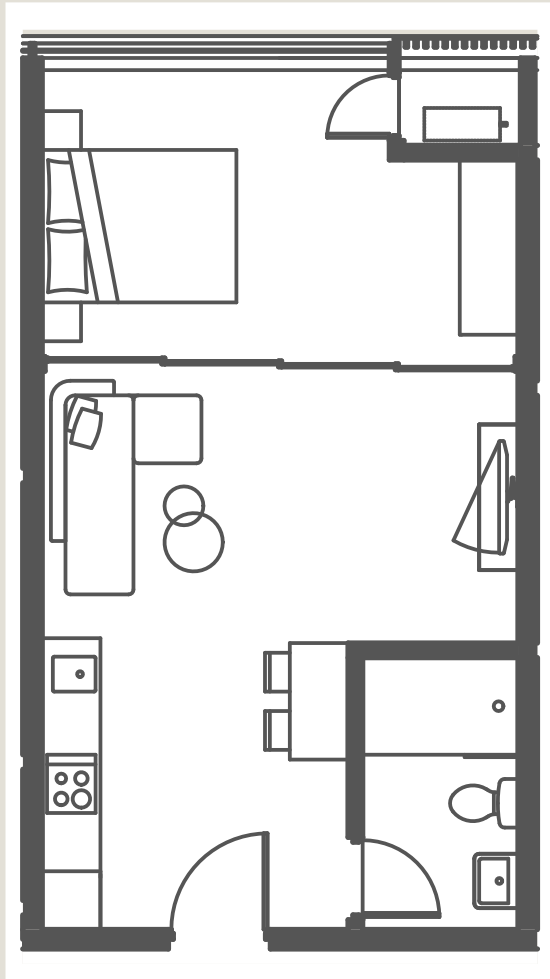
### APT NO.

### FLOOR

### PRICE

1010	Floor 10	\$117,150.00
1104	Floor 11	\$119,100.00
1204	Floor 12	\$121,050.00
1209	Floor 12	\$121,050.00

# 1 BEDROOM TYPE C

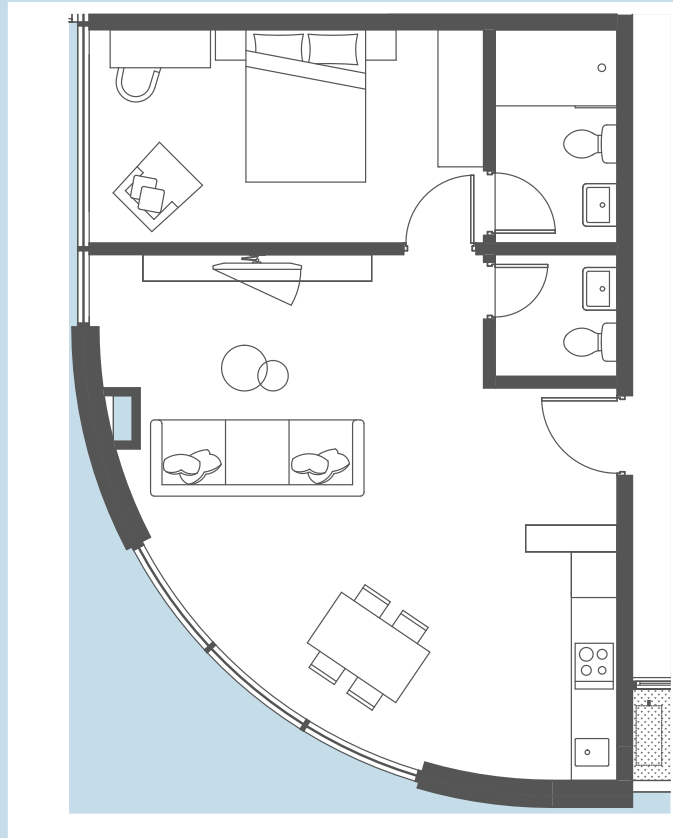


## DIMENSIONS

Bath	— 5 m <sup>2</sup>
Bedroom / Living Area	— 41 m <sup>2</sup>
Total Area: 2	— 46 m <sup>2</sup>

APT NO.	FLOOR	PRICE
315	Floor 3	\$125,600.00
406	Floor 4	\$127,900.00
506	Floor 5	\$130,200.00
604	Floor 6	\$132,500.00
615	Floor 6	\$132,500.00

# 1 BEDROOM TYPE I

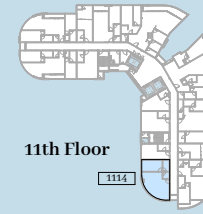


## LOCATION



10th Floor

1014



11th Floor

1114



13th Floor

1308



14th Floor

1404

## DIMENSIONS

Bath	—	5 m <sup>2</sup>
Bedroom	—	15 m <sup>2</sup>
Guest WC	—	3 m <sup>2</sup>
Living Area	—	38 m <sup>2</sup>
Total Area: 4	—	61 m <sup>2</sup>

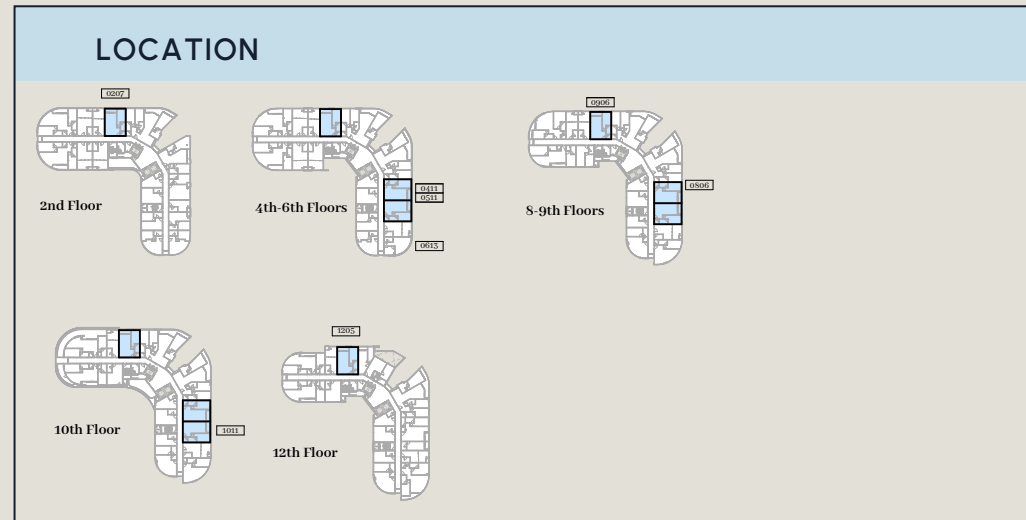
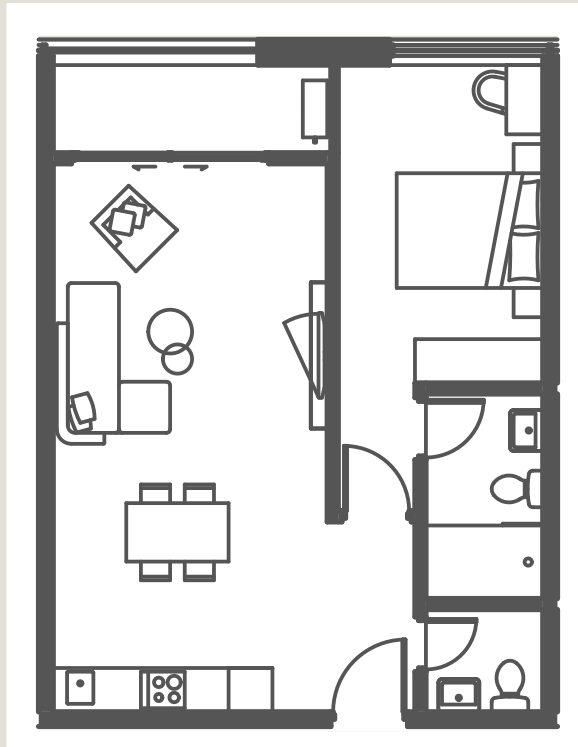
## APT NO.

## FLOOR

## PRICE

1014	Floor 10	\$179,850.00
1114	Floor 11	\$182,900.00
1308	Floor 13	\$189,000.00
1404	Floor 14	\$192,050.00

# 1 BEDROOM TYPE J

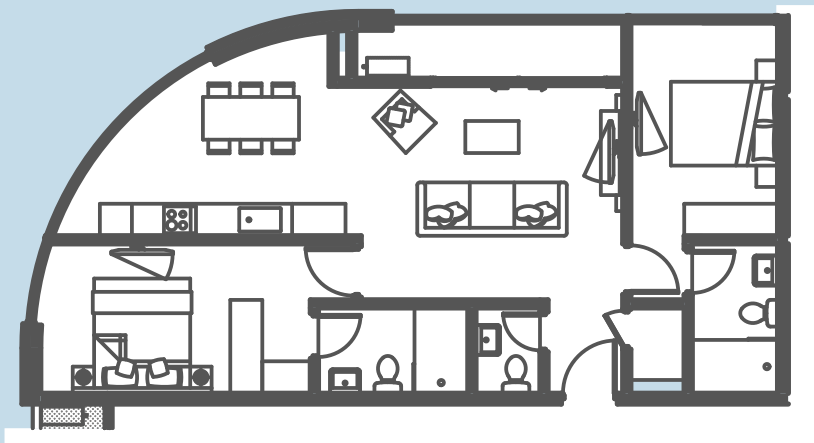


DIMENSIONS		
Balcony	—	5 m <sup>2</sup>
Bath	—	5 m <sup>2</sup>
Bedroom	—	15 m <sup>2</sup>
Guest WC	—	3 m <sup>2</sup>
Living Area	—	38 m <sup>2</sup>
Total Area: 4	—	62 m <sup>2</sup>

APT NO.	FLOOR	PRICE
411	Floor 4	\$167,200.00
511	Floor 5	\$170,300.00
613	Floor 6	\$173,400.00
809	Floor 8	\$179,600.00
906	Floor 9	\$182,700.00
1011	Floor 10	\$185,800.00
1205	Floor 12	\$188,900.00

# 2 BEDROOM

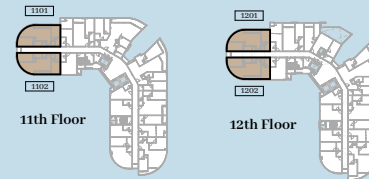
## TYPE A



### DIMENSIONS

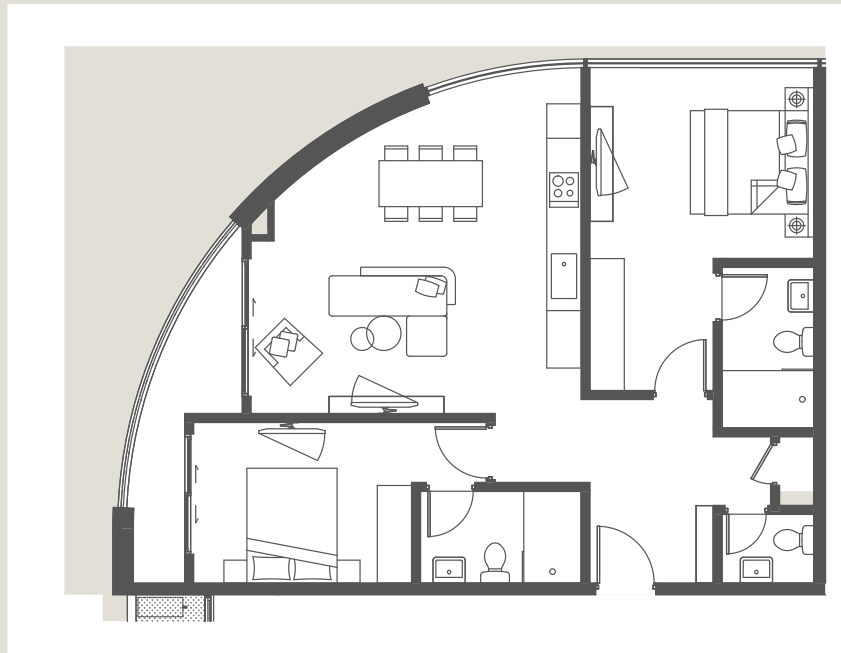
Balcony	—	5 m <sup>2</sup>
Bath 1	—	5 m <sup>2</sup>
Bath 2	—	5 m <sup>2</sup>
Bedroom 1	—	16 m <sup>2</sup>
Bedroom 2	—	13 m <sup>2</sup>
Guest WC	—	2 m <sup>2</sup>
Living Area	—	40 m <sup>2</sup>
Store	—	2 m <sup>2</sup>
Total Area: 8	—	88 m <sup>2</sup>

### LOCATION

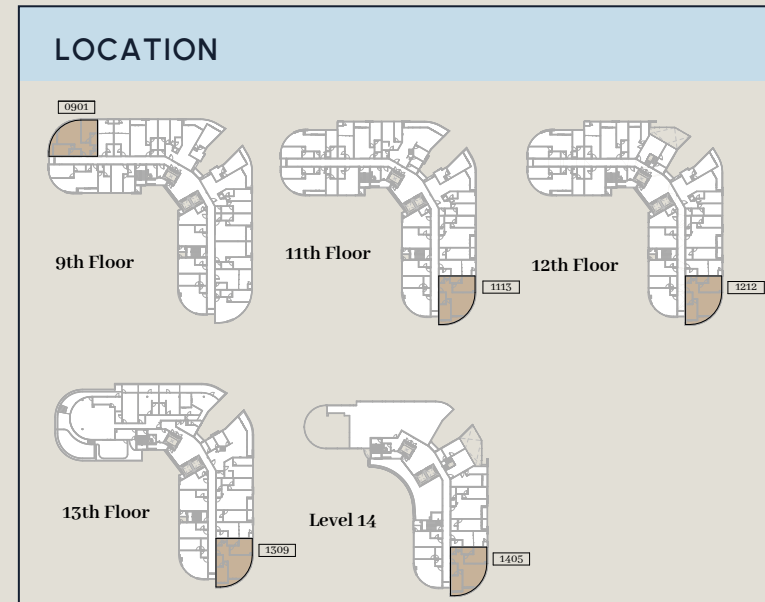


APT NO.	FLOOR	PRICE
1201	Floor 12	\$261,200.00
1202	Floor 12	\$261,200.00

# 2 BEDROOM TYPE C



APT NO.	FLOOR	PRICE
901	Floor 9	\$264,500.00
1113	Floor 11	\$273,900.00
1212	Floor 12	\$278,600.00
1309	Floor 13	\$283,300.00

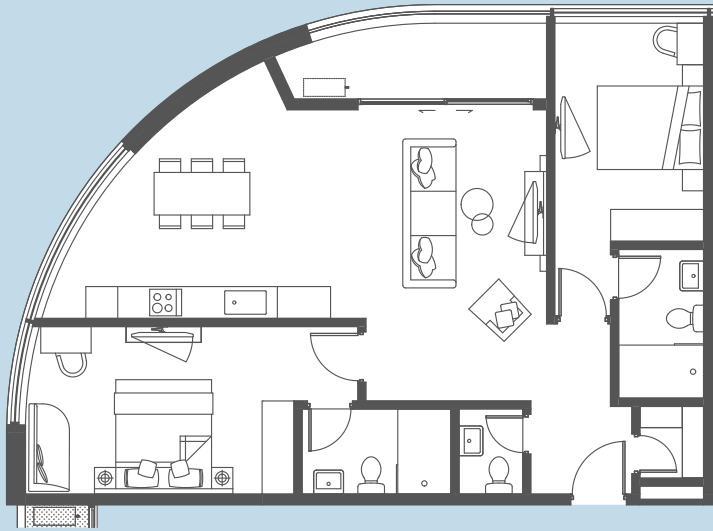


## DIMENSIONS

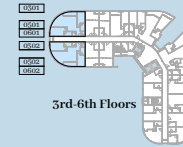
Balcony	—	6 m <sup>2</sup>
Bath 1	—	5 m <sup>2</sup>
Bath 2	—	5 m <sup>2</sup>
Bedroom 1	—	19 m <sup>2</sup>
Bedroom 2	—	13 m <sup>2</sup>
Guest WC	—	2 m <sup>2</sup>
Living Area	—	43 m <sup>2</sup>
Store	—	1 m <sup>2</sup>
Total Area: 8	—	94 m <sup>2</sup>

# 2 BEDROOMS

## TYPE F



### LOCATION



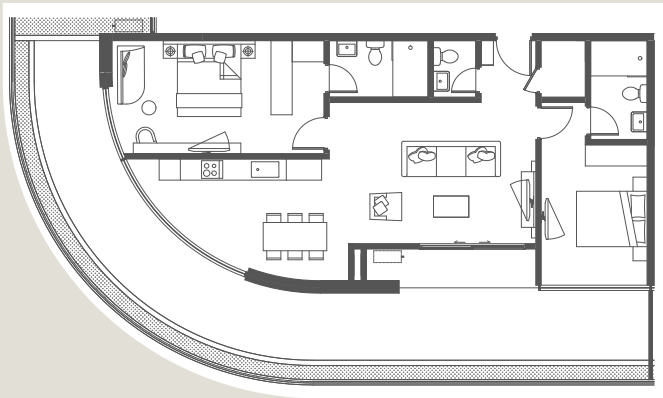
### 2 Beds - Type F

Balcony	7 m <sup>2</sup>
Bath 1	10 m <sup>2</sup>
Bedroom 1	33 m <sup>2</sup>
Guest WC	2 m <sup>2</sup>
Living Area	47 m <sup>2</sup>
Store	3 m <sup>2</sup>
Total Area: 8	102 m <sup>2</sup>

APT NO.	FLOOR	PRICE
301	Floor 3	\$261,000.00
302	Floor 3	\$261,000.00
501	Floor 5	\$271,200.00
502	Floor 5	\$271,200.00
601	Floor 6	\$276,300.00

# 2 BEDROOMS

## TYPE j



### LOCATION



#### 2 Beds - Type J

Balcony	67 m <sup>2</sup>
Bath 1	5 m <sup>2</sup>
Bath 2	5 m <sup>2</sup>
Bedroom 1	20 m <sup>2</sup>
Bedroom 2	14 m <sup>2</sup>
Guest WC	2 m <sup>2</sup>
Living Area	43 m <sup>2</sup>
Store	3 m <sup>2</sup>
Total Area: 9	159 m <sup>2</sup>

#### APT NO.

702

#### FLOOR

Floor 7

#### PRICE

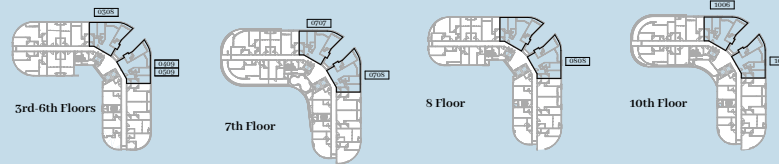
\$435,300.00

# 3 BEDROOMS

## TYPE A



### LOCATION

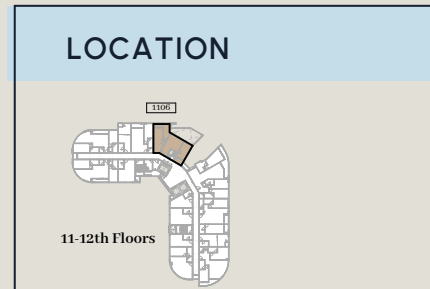


### 3 Beds - Type A

Balcony	13 m <sup>2</sup>
Bath 1	8 m <sup>2</sup>
Bath 2	5 m <sup>2</sup>
Bath 3	5 m <sup>2</sup>
Bedroom 1	20 m <sup>2</sup>
Bedroom 2	15 m <sup>2</sup>
Bedroom 3	15 m <sup>2</sup>
Guest WC	3 m <sup>2</sup>
Living Area	52 m <sup>2</sup>
Store	2 m <sup>2</sup>
<b>Total Area: 10</b>	<b>138 m<sup>2</sup></b>

APT NO.	FLOOR	PRICE
308	Floor 3	\$364,800.00
409	Floor 4	\$371,700.00
508	Floor 5	\$378,600.00
707	Floor 7	\$392,400.00
708	Floor 7	\$392,400.00
808	Floor 8	\$399,300.00
1006	Floor 10	\$413,100.00
1007	Floor 10	\$413,100.00

# 3 BEDROOMS PENTHOUSE UPPER & LOWER FLOOR TYPE A



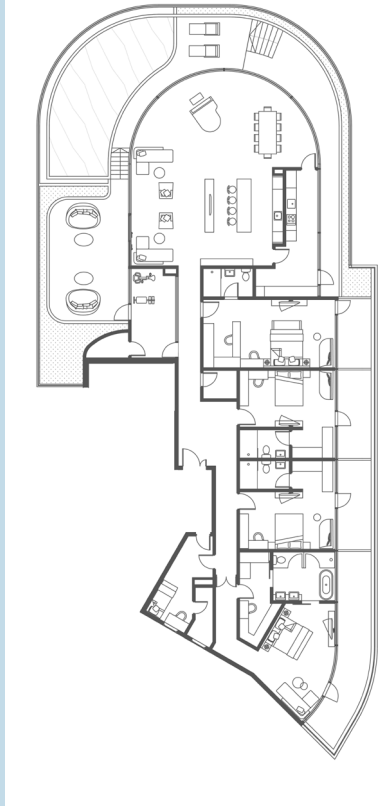
APT NO.	FLOOR	PRICE
1106	Floor 11-12	\$675,000.00

**DIMENSIONS**

Balcony 1	—	15 m <sup>2</sup>
Bath 1	—	10 m <sup>2</sup>
Bedroom 1	—	24 m <sup>2</sup>
Guest WC	—	4 m <sup>2</sup>
Living Area	—	45 m <sup>2</sup>
Nanny Room	—	10 m <sup>2</sup>
Show Kitchen / Dining	—	22 m <sup>2</sup>
Wet Kitchen	—	8 m <sup>2</sup>
Total Area: S	—	138 m <sup>2</sup>

# 4 Bedrooms Penthouse

## TYPE A



### LOCATION



13th Floor

### 4 Beds -Penthouse Type A

Balcony	168 m <sup>2</sup>
Bath 1	10 m <sup>2</sup>
Bath 2	5 m <sup>2</sup>
Bath 3	5 m <sup>2</sup>
Bath 4	5 m <sup>2</sup>
Bedroom 1	30 m <sup>2</sup>
Bedroom 2	23 m <sup>2</sup>
Bedroom 3	23 m <sup>2</sup>
Bedroom 4	30 m <sup>2</sup>
Guest WC	4 m <sup>2</sup>
Gym Room	16 m <sup>2</sup>
Living Area	106 m <sup>2</sup>
Nanny Room	16 m <sup>2</sup>
Pool	46 m <sup>2</sup>
Show Kitchen	21 m <sup>2</sup>
Walk-in Wardrobe	10 m <sup>2</sup>
Wet Kitchen	17 m <sup>2</sup>
Total Area: 17	535 m <sup>2</sup>

APT NO.	FLOOR	PRICE
1301	Floor 13	\$1,664,500.00

# PAYMENT PLANS AND DISCOUNT POLICY

## Payment Plans

Reservation Fee - \$5,000

1. Cash Payment Plans - Not less than 80% within 30 days
2. Installment Payment Plans - From the date of the Reservation Fee

Installments	Period	Plan A	Plan B	Plan C
1st	1st Month	20%	30%	40%
2nd	6th Month	20%	25%	NIL
3rd	12th Month	20%	10%	20%
4th	18th Month	20%	20%	NIL
5th	24th Month	10%	NIL	15%
Final	On Completion	10%	15%	25%

# PAYMENT PLANS AND DISCOUNT POLICY - continued...

## Mortgage Payment Plans Reservation Fee \$5,000

- |                 |                  |           |
|-----------------|------------------|-----------|
| 1. Installments | 1. Period        | 1. Plan A |
| 1. 1st          | 1. 1st Month     | 1. 30%    |
| 1. Final        | 1. At Completion | 1. 70%    |

### 1. Discount Policy

UPFRONT %	DISCOUNT %		
Payment %	Studio's & 1 Bed's	2 Bed & 3 Apartment	Penthouse
80%	4%	6%	8%
100%	5.5%	7.5	10%

# DISCLAIMER

Whilst every effort has been given to ensure that the information here is correct, this is to act specifically as a guide and Quao Realty reserves the right to amend the specification as necessary and without notice.

Images displayed are for illustrive purposes



[quaorealty.com](http://quaorealty.com)

House No. 14, First Close,  
Airport Residential, Accra.

+233 277 890 000

[sales@quaorealty.com](mailto:sales@quaorealty.com)